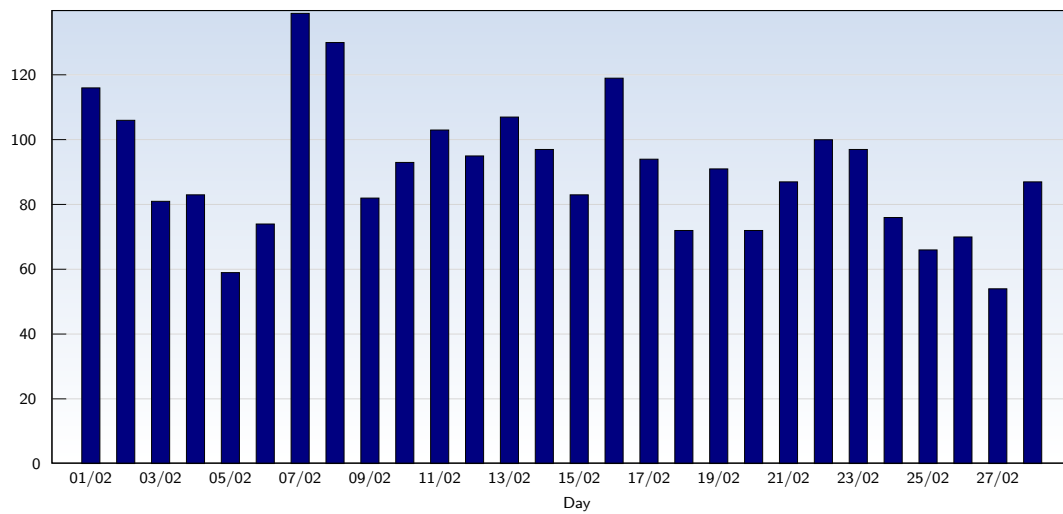


Unique Visits

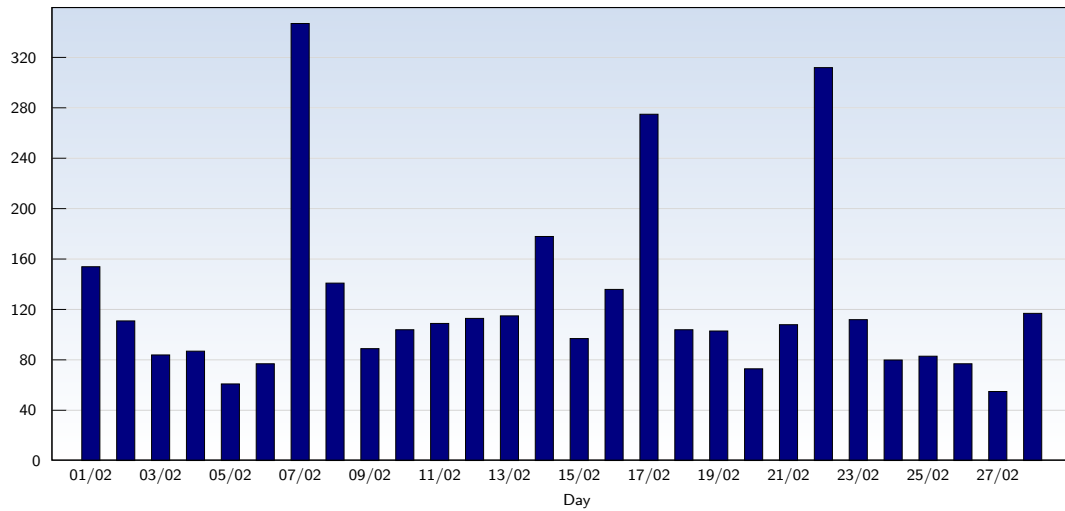


Date	Amount
Tuesday 01/02/11	116
Wednesday 02/02/11	106
Thursday 03/02/11	81
Friday 04/02/11	83
Saturday 05/02/11	59
Sunday 06/02/11	74
Monday 07/02/11	139
Tuesday 08/02/11	130
Wednesday 09/02/11	82
Thursday 10/02/11	93
Friday 11/02/11	103
Saturday 12/02/11	95
Sunday 13/02/11	107
Monday 14/02/11	97

Date	Amount
Tuesday 15/02/11	83
Wednesday 16/02/11	119
Thursday 17/02/11	94
Friday 18/02/11	72
Saturday 19/02/11	91
Sunday 20/02/11	72
Monday 21/02/11	87
Tuesday 22/02/11	100
Wednesday 23/02/11	97
Thursday 24/02/11	76
Friday 25/02/11	66
Saturday 26/02/11	70
Sunday 27/02/11	54
Monday 28/02/11	87
Total	2533

This analysis summarises multiple page impressions of an individual visitor into unique visits. A visitor is counted as an unique visit when requesting at least one page. If more than 30 minutes have elapsed since the first page impression, further requests will be counted as a new unique visit.

Page Views



Date	Amount
Tuesday 01/02/11	154
Wednesday 02/02/11	111
Thursday 03/02/11	84
Friday 04/02/11	87
Saturday 05/02/11	61
Sunday 06/02/11	77
Monday 07/02/11	347
Tuesday 08/02/11	141
Wednesday 09/02/11	89
Thursday 10/02/11	104
Friday 11/02/11	109
Saturday 12/02/11	113
Sunday 13/02/11	115
Monday 14/02/11	178

Date	Amount
Tuesday 15/02/11	97
Wednesday 16/02/11	136
Thursday 17/02/11	275
Friday 18/02/11	104
Saturday 19/02/11	103
Sunday 20/02/11	73
Monday 21/02/11	108
Tuesday 22/02/11	312
Wednesday 23/02/11	112
Thursday 24/02/11	80
Friday 25/02/11	83
Saturday 26/02/11	77
Sunday 27/02/11	55
Monday 28/02/11	117
Total	3502

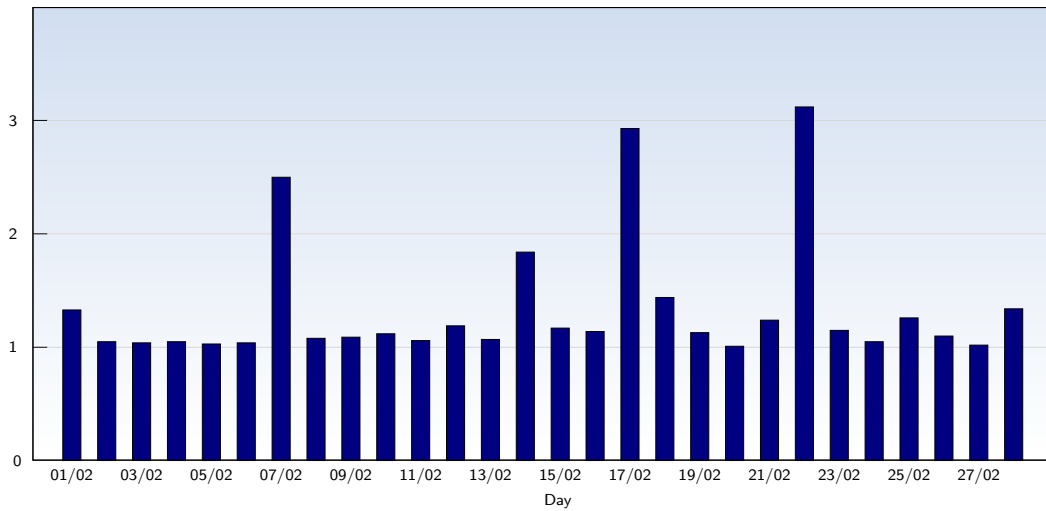
These statistics show all successful page views (also known as page impressions) and the time they were made. Only fully loaded pages are counted. Individual images and components are not included.



Monthly Report 01/02/11 - 28/02/11

For all domains and subdomains

Pages per Visit



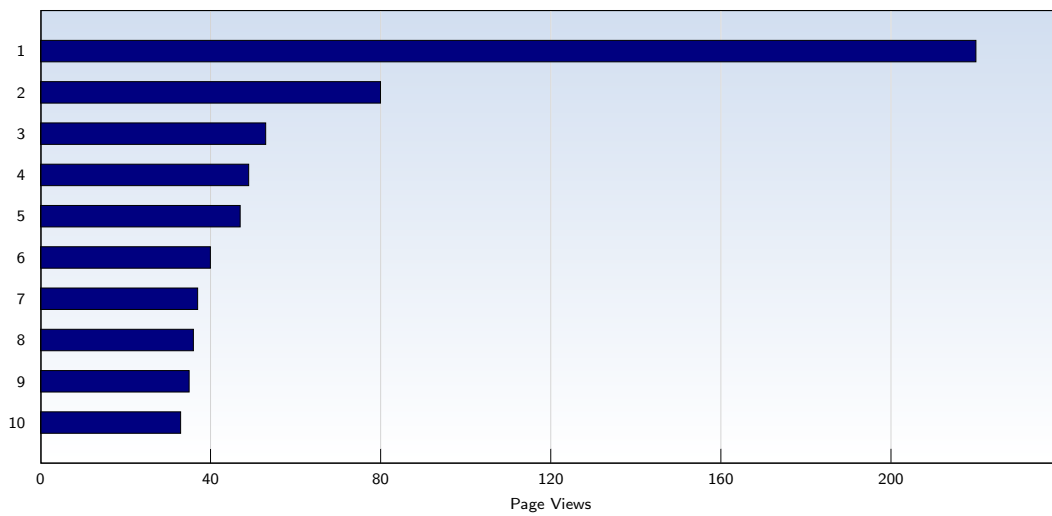
Date	Amount
Tuesday 01/02/11	1.33
Wednesday 02/02/11	1.05
Thursday 03/02/11	1.04
Friday 04/02/11	1.05
Saturday 05/02/11	1.03
Sunday 06/02/11	1.04
Monday 07/02/11	2.50
Tuesday 08/02/11	1.08
Wednesday 09/02/11	1.09
Thursday 10/02/11	1.12
Friday 11/02/11	1.06
Saturday 12/02/11	1.19
Sunday 13/02/11	1.07
Monday 14/02/11	1.84

Date	Amount
Tuesday 15/02/11	1.17
Wednesday 16/02/11	1.14
Thursday 17/02/11	2.93
Friday 18/02/11	1.44
Saturday 19/02/11	1.13
Sunday 20/02/11	1.01
Monday 21/02/11	1.24
Tuesday 22/02/11	3.12
Wednesday 23/02/11	1.15
Thursday 24/02/11	1.05
Friday 25/02/11	1.26
Saturday 26/02/11	1.10
Sunday 27/02/11	1.02
Monday 28/02/11	1.34
Average	1.38

The average number of pages opened per unique visit. Only fully loaded pages are counted.



Top 10 Popular Pages

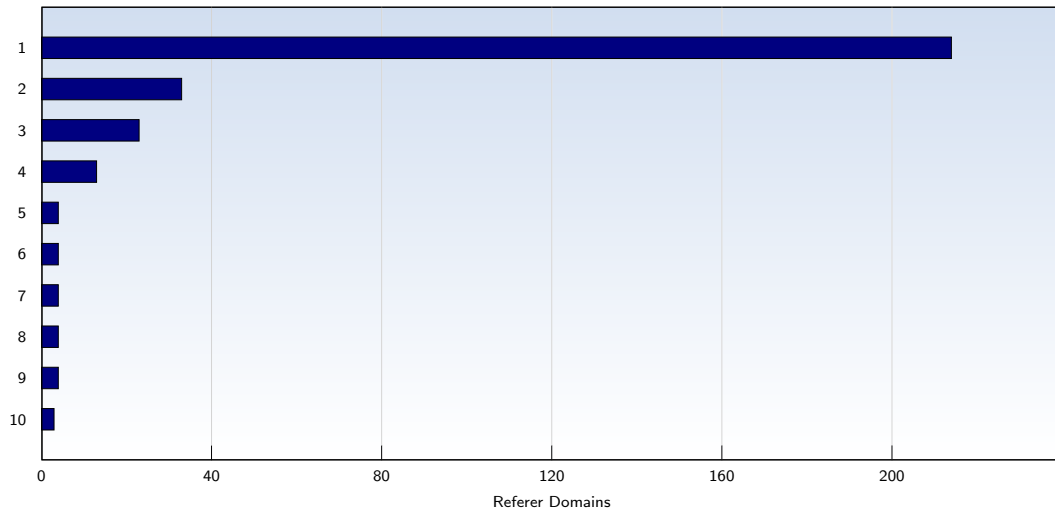


Rank	Page	Amount	%
1	imechewestcumbria.org.uk/	220	6
2	imechewestcumbria.org.uk/downloads/profregpres.ppt	80	2
3	imechewestcumbria.org.uk/downloads/routesprofregoct2006.ppt	53	1
4	imechewestcumbria.org.uk/events.html	49	1
5	imechewestcumbria.org.uk/index.html	47	1
6	imechewestcumbria.org.uk/events/20102011/environmentalimpactassessment.html	40	1
7	imechewestcumbria.org.uk/downloads/eventslistingped20052006.doc	37	1
8	imechewestcumbria.org.uk/downloads/ped0607listing.pdf	36	1
9	imechewestcumbria.org.uk/events/20092010/thebondmuseum.html	35	0
10	imechewestcumbria.org.uk/events/20032004/kursk.html	33	0
	Total	3502	

These statistics show you the most frequently called pages.



Top 10 Referer Domains



Rank	Domain	Amount	%
1	google.co.uk	214	8
2	google.com	33	1
3	bing.com	23	0
4	yahoo.com	13	0
5	google.de	4	0
6	google.es	4	0
7	semrush.com	4	0
8	whorush.com	4	0
9	yandex.ru	4	0
10	google.co.kr	3	0
	Total	339	

339 out of 2533 visits contained a referer that could be evaluated. This analysis shows domains referring to your site. Subpages are summarised under the main domain.